

Music works in the GND and other authority datasets

Laurent Pugin

GNDCon 2.0 – 7 June 2021

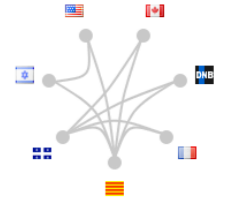
Werknormdaten der Musik
Bibliotheken und Wissenschaft im Gespräch



Datasets

- ❖ DNB (started in 2012) - available in RDF
 - ❖ 217,055 music works (410,736 works; 5,380 expressions)
- ❖ BnF (started in 2011) - available in RDF
 - ❖ 172,127 music works
- ❖ VIAF
 - ❖ 115,570,369 links
 - ❖ 855,502 links pointing to or from the DNB of the BnF works
- ❖ MusicBrainz (started in 2000)
 - ❖ 1,309,201 works
 - ❖ MB-1920 with composers born before 1920
 - ❖ 236,640 music works
 - ❖ MB-Series with curated catalogues
 - ❖ 24,198 music works
- ❖ IMSLP (started in 2006)
 - ❖ 163,668 music works
 - ❖ API (basic data) and HTTP requests

[240 _ _ ta Bach tb Johann Sebastian tf 1685-1750 tt Musique de chambre ts BWV 1007-1040](#)
[100 1 _ ta Bach, Johann Sebastian td 1685-1750 tt Kammermusik](#)
[100 1 _ ta Bach, Johann Sebastian td 1685-1750 tt Musique instrumentale tk Extraits](#)
[100 1 _ ta Bach, Johann Sebastian td 1685-1750 tt Instrumental music tk Selections](#)
[100 1 _ ta Bach, Johann Sebastian td 1685-1750 tt Instrumental music tk Selections](#)
[100 1 _ ta Bach, Johann Sebastian td 1685-1750 tt Musique instrumentale tk Extraits](#)
[100 1 _ ta Bach, Johann Sebastian td 1685-1750 tt Música instrumental tk Selecciones](#)



```
LC|n 82150575
J9U|987007594707705171
BNC|.a12214863
DNB@http://d-nb.info/gnd/1096808099
LC|n82150575
BNF@http://catalogue.bnf.fr/ark:/12148/cb14038626m
DNB|1096808099
B2Q|0000448640
CAOONL|ncf10122328
BNC|a12214863
BNF|14038626
```

Main questions

- ❖ Can we compare what these datasets currently contain?
- ❖ Can we evaluate what their level of linkage currently is?

Laurent Pugin, Claudio Bacciagaluppi:
An Analysis of Musical Work Datasets and their
Current Level of Linkage. DLfM 2020: 32-39

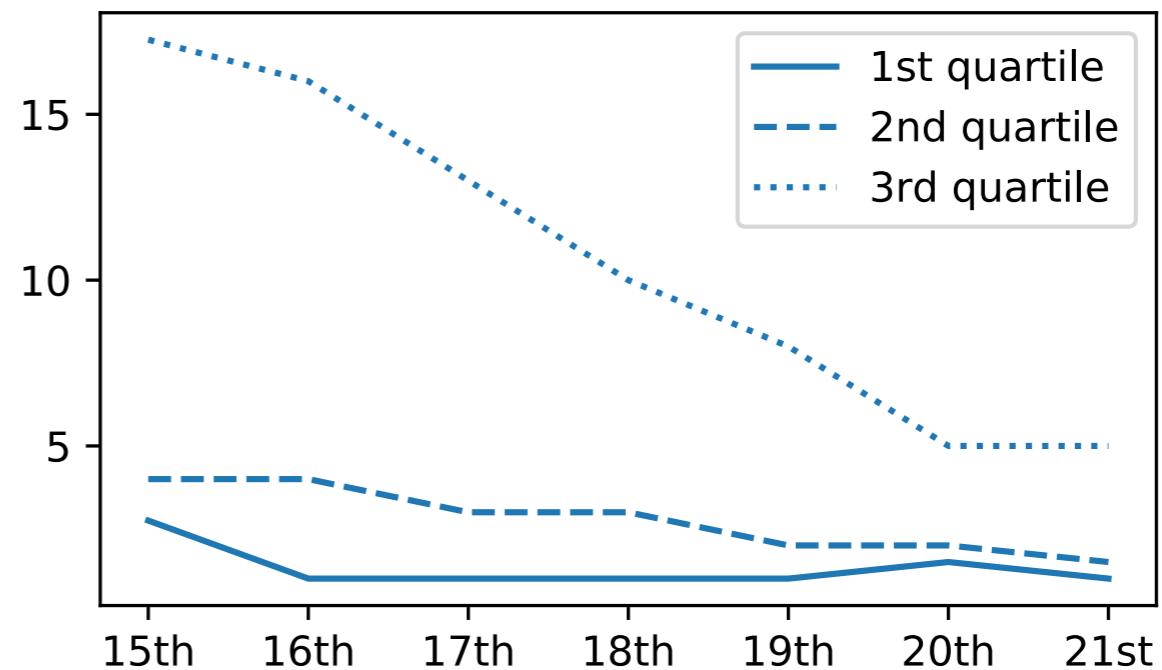
Analysis by composer

❖ DNB gnd:firstComposer / BnF dcterms:creator

| | Works analysed | Nb of composers | Number of works by composer | | | | |
|-----------|----------------|-----------------|-----------------------------|-----|----|----|----|
| | | | Max | AVG | Q3 | Q2 | Q1 |
| DNB | 208,392 | 27,878 | 2,133 | 7 | 4 | 1 | 1 |
| BnF | 173,515 | 23,332 | 1,194 | 7 | 4 | 2 | 1 |
| MB-1920 | 236,640 | 10,006 | 6,501 | 24 | 9 | 3 | 1 |
| IMSLP | 163,668 | 18,748 | 2,006 | 9 | 6 | 2 | 1 |
| MB-Series | 24,198 | 404 | 1,474 | 60 | 50 | 21 | 6 |

Number of works by composer in the datasets with the maximum and average values and the 3rd, 2nd and 1st quartiles (Q3, Q2 and Q1)

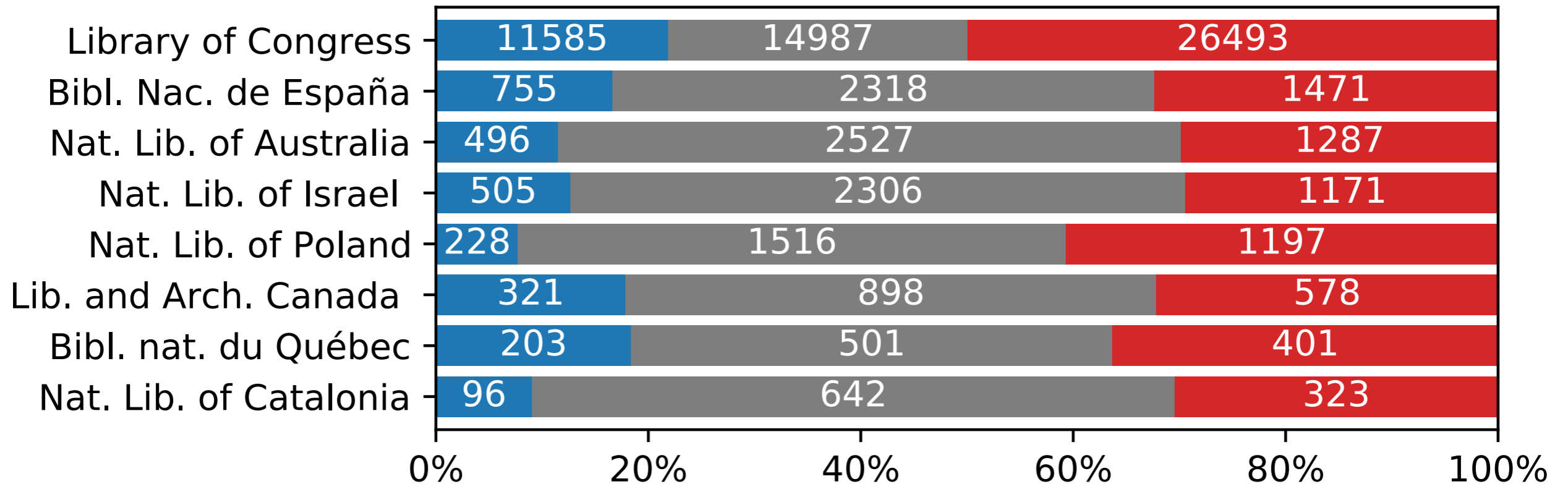
Number of works by composer century by century for the BnF dataset, with 1st,



Links between DNB and BnF in VIAF

❖ 18,702 VIAF clusters (11% of BnF and 8.5% of DNB)

Works mapped with other libraries through VIAF

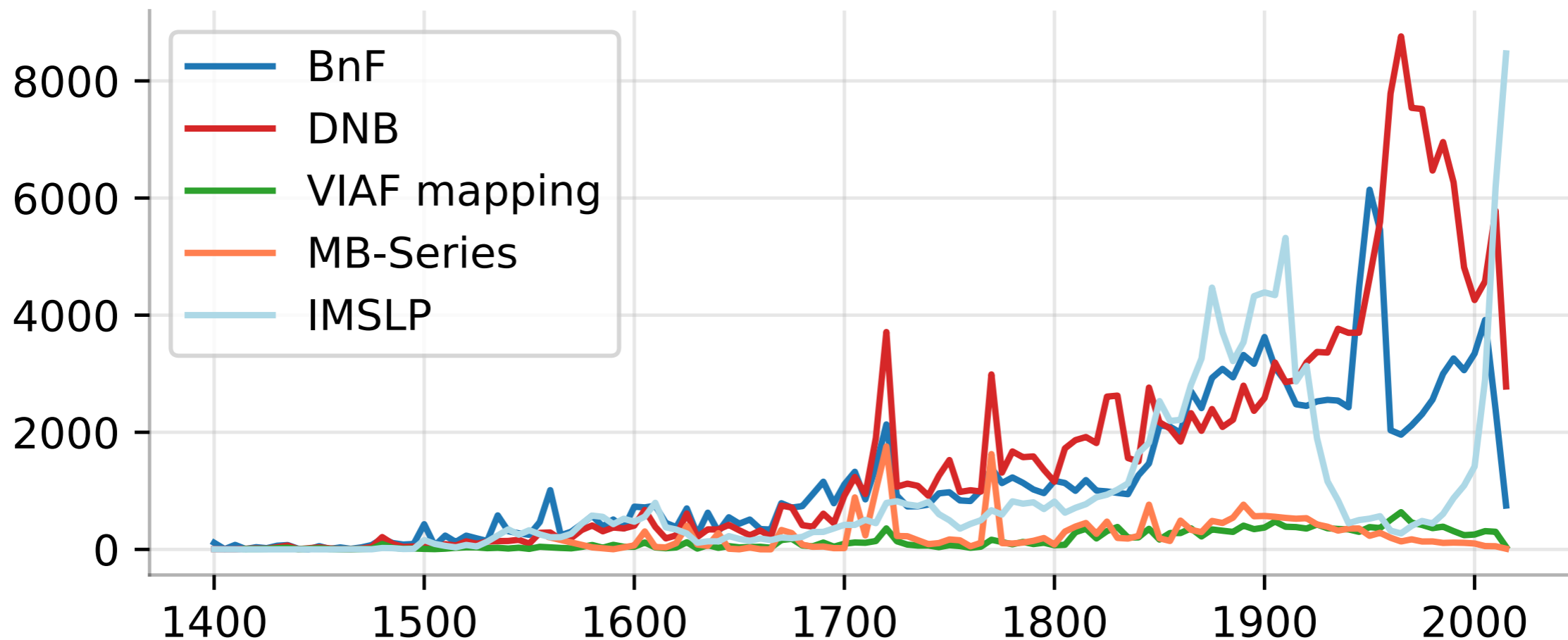


Number of works from the BnF and DNB mapped through VIAF to the 8 libraries with the highest number of links

Variation over time

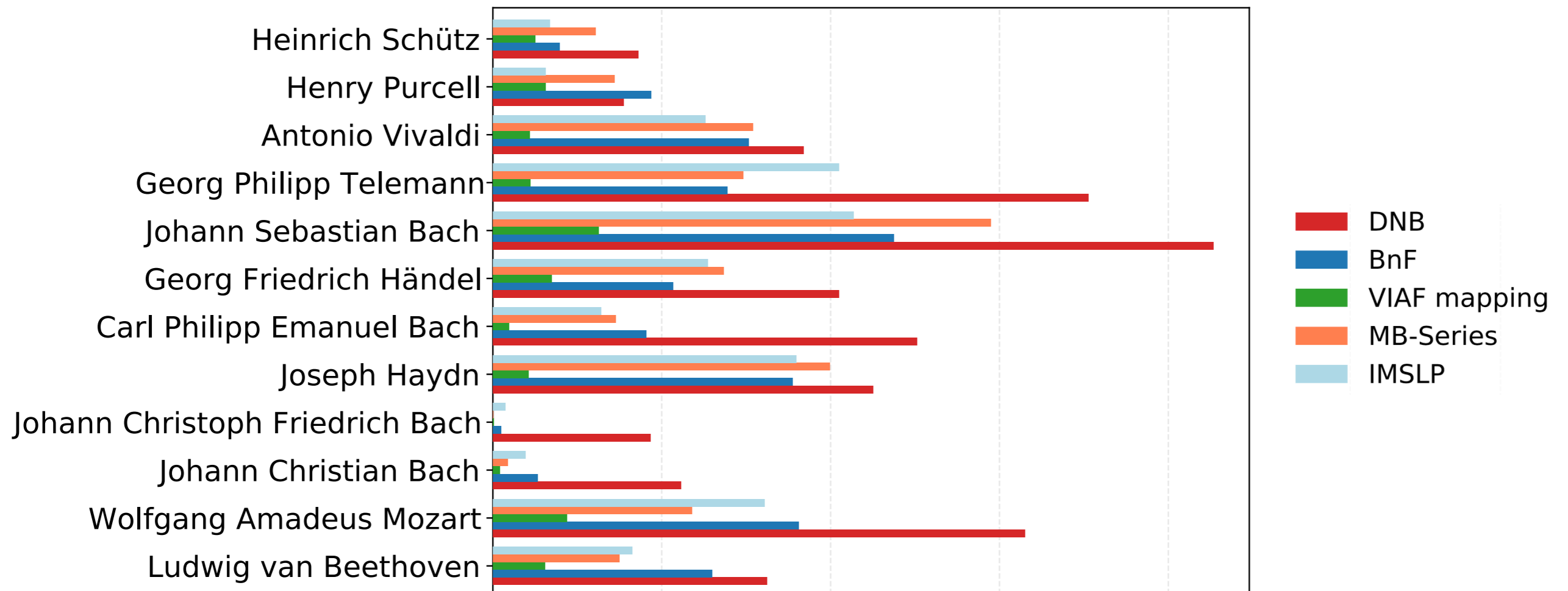
- ❖ DNB gnd:dateOfProduction (35%)
- ❖ BnF dcterms:date or bnf-onto:firstYear (63%)
- ❖ DNB and BnF composer birth / death years to approximate works without date
- ❖ IMSLP composition date, first publication, first performance

Works (1400 - 2020)



Composers with most work

- ❖ Mapping through VIAF for these is higher
 - ◆ 30% from BnF / 18% from DNB
- ❖ Systematically more works by composer in DNB than in other datasets
 - ◆ 1.65 times more than in BnF
 - ◆ 2.0 times more than in IMSLP and MB-Series



Bach example

- ❖ DNB `gnd:broaderTermPartitive` / BnF `ore:isAggregatedBy`
- ❖ Up to three levels in both DNB and BnF
 - ❖ Example: *Das wohltemperierte Klavier* in DNB
 - ❖ Preludes and fugues (though not all, only 37 for book I) listed as distinct works
- ❖ Top-level work entities are significantly better mapped in VIAF than lower ones

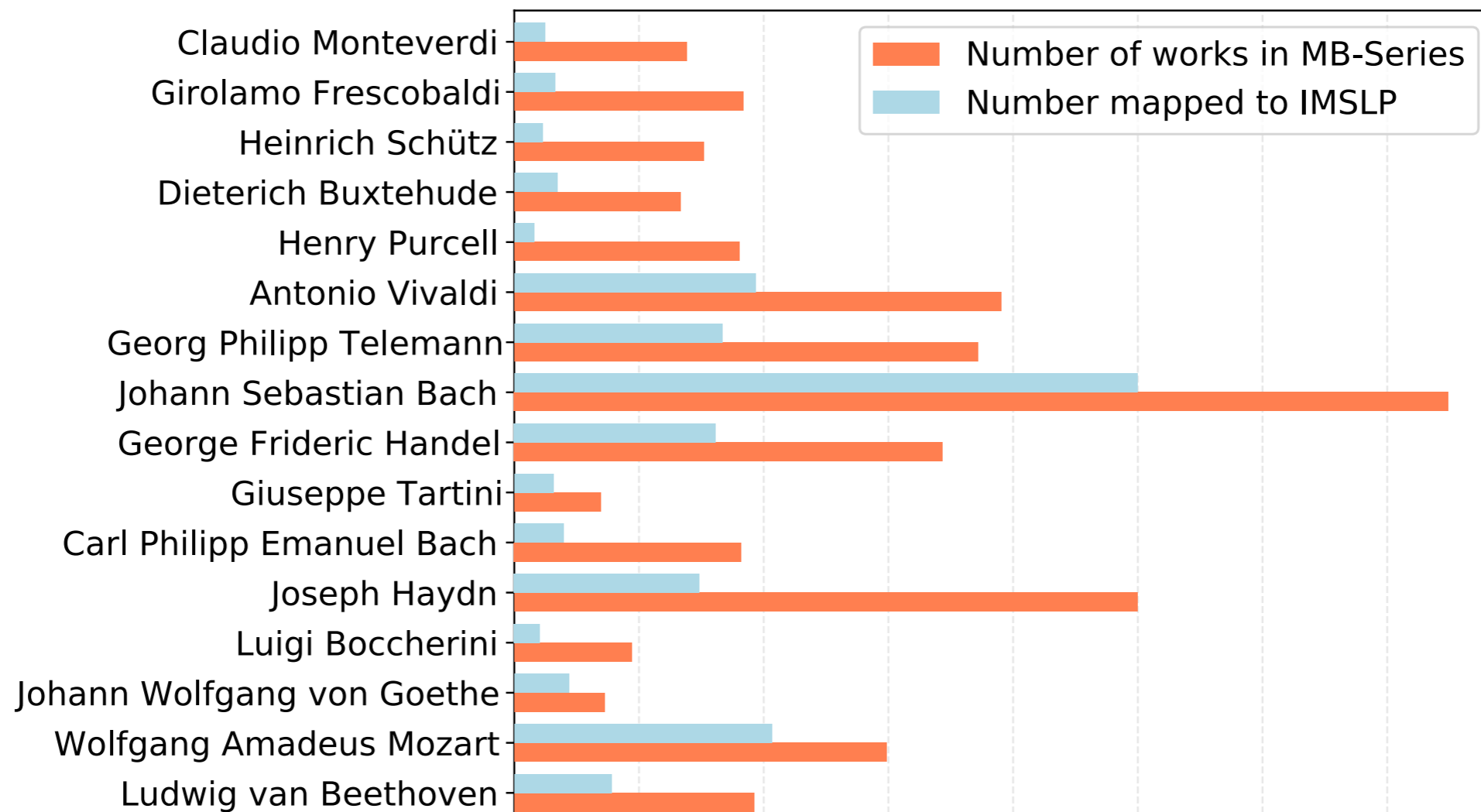
| | DNB | BnF mapping | | LC mapping | |
|-----------------------|-------|-------------|------------|------------|------------|
| | | # | % | # | % |
| Total | 2,133 | 311 | 15% | 625 | 29% |
| Top-level | 744 | 232 | 31% | 268 | 36% |
| 2 nd level | 1,389 | 79 | 6% | 357 | 26% |
| 3 rd level | 280 | 3 | 1% | 22 | 8% |

- ❖ Mapping also differs significantly when looking at the medium of performance

Mapping with MB, IMSLP and Wikidata

- ❖ Wikidata lists about 10,000 music compositions (and 1,000 musical works)
- ❖ Of the 24'198 works listed in MB-Series, 9,079 have a link to IMSLP

| | IMSLP | | MB-Series | | Wikidata | |
|------|-------|-------------|-----------|-------------|----------|-------------|
| | # | % | # | % | # | % |
| DNB | 1,303 | 0.8% | 106 | 0.4% | 509 | 4.8% |
| BnF | 2,006 | 1.2% | 173 | 0.7% | 689 | 6.5% |
| LC | 1,338 | 0.8% | 31 | 0.1% | 568 | 5.4% |
| VIAF | 1,745 | 1.1% | 1,100 | 4.5% | 702 | 6.7% |



Summary

- ❖ Number of works by composers in all library datasets are very low
 - ◆ Large datasets contain only a couple of works for most composers
- ❖ Mapping with VIAF remains relatively low
 - ◆ Mapping between DNB and LC is the highest
- ❖ Looking over time
 - ◆ BnF contains more works than DNB until the 17th century
 - ◆ Curves for each dataset can fluctuate over short periods
- ❖ The definition of a work varies significantly between datasets
 - ◆ DNB has systematically a lower-level granularity with movements listed as distinct works

Thank you!

laurent.pugin@rism.digital

<https://rism.digital>



FONDS NATIONAL SUISSE
SCHWEIZERISCHER NATIONALFONDS
FONDO NAZIONALE SVIZZERO
SWISS NATIONAL SCIENCE FOUNDATION

